



COPPER MOUNTAIN CONSOLIDATED METROPOLITAN DISTRICT

January 12, 2012

Division of Local Government
Department of Local Affairs
1313 Sherman Street, Room 521
Denver, Colorado 80203

59039

To Whom It May Concern:

Please be advised that the jurisdictional boundaries of Copper Mountain Consolidated Metropolitan District have not changed since its consolidation in 1996 – there have been no exclusions or inclusions – and, therefore, maps of the District’s jurisdictional boundaries remain unchanged from maps currently of record with the Department.

Sincerely,

David R. Erickson
District Manager



LEGAL DESCRIPTION

COPPER MOUNTAIN CONSOLIDATED METROPOLITAN DISTRICT

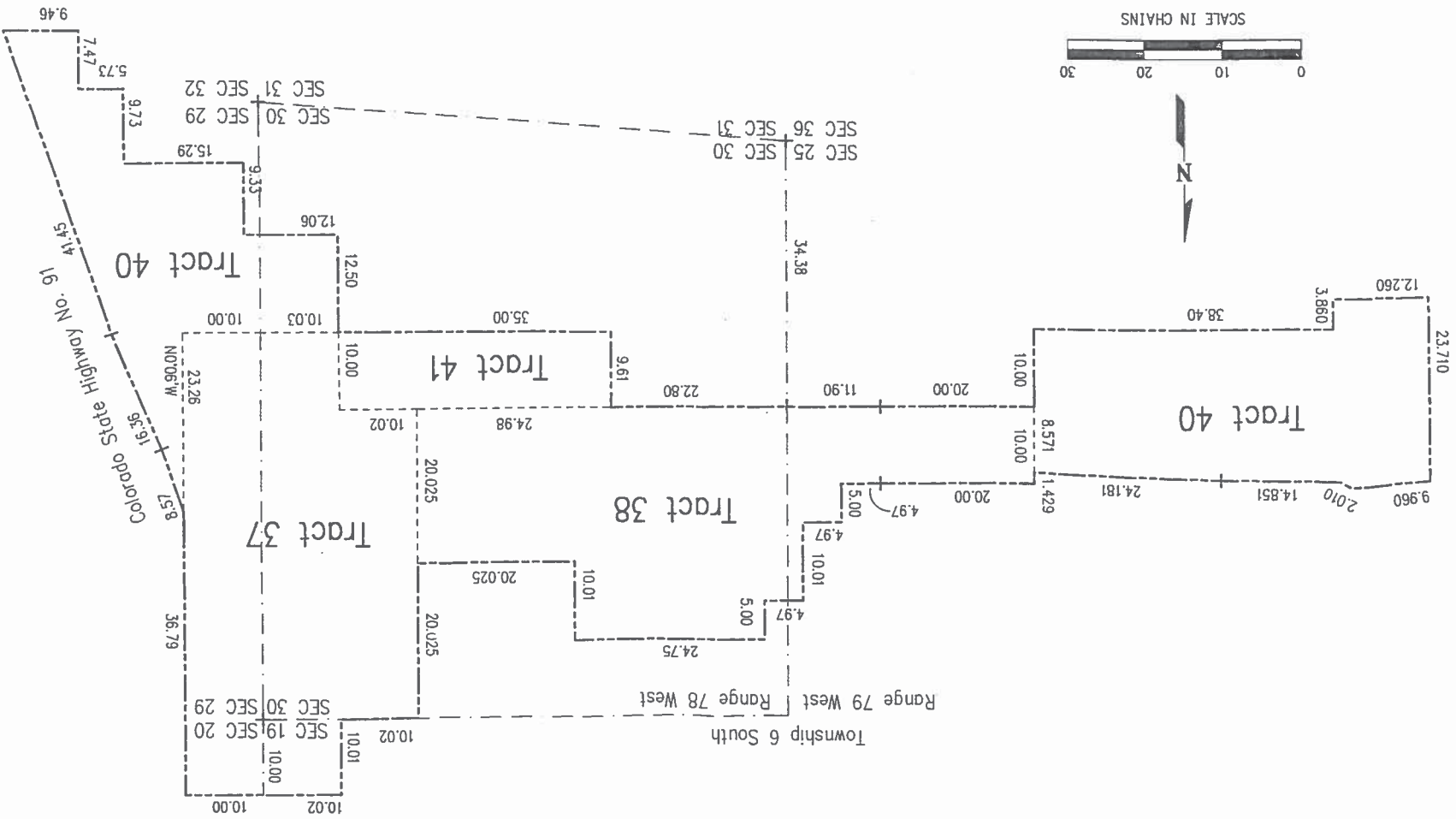
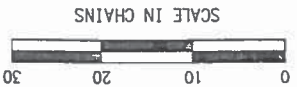
June 21, 2007

Tract 37; the easterly portion of Tract 38; Tract 40; and Tract 41, Township 6 South, Range 78 West of the 6th Principal Meridian; and the westerly portion of Tract 38; and Tract 40, Township 6 South, Range 79 West of the 6th Principal Meridian.

Received

JAN 17 2012

Dept. of Local Affairs



Colorado State Highway No. 19
16.36
14.45
1006'W
15.29
9.73
9.46
7.47
5.73

Copper Mountain Consolidated Metropolitan District - 1996

Rothberg, Tamburini & Winsor, Inc.

Received
JAN 17 2012
Dept. of Local Affairs